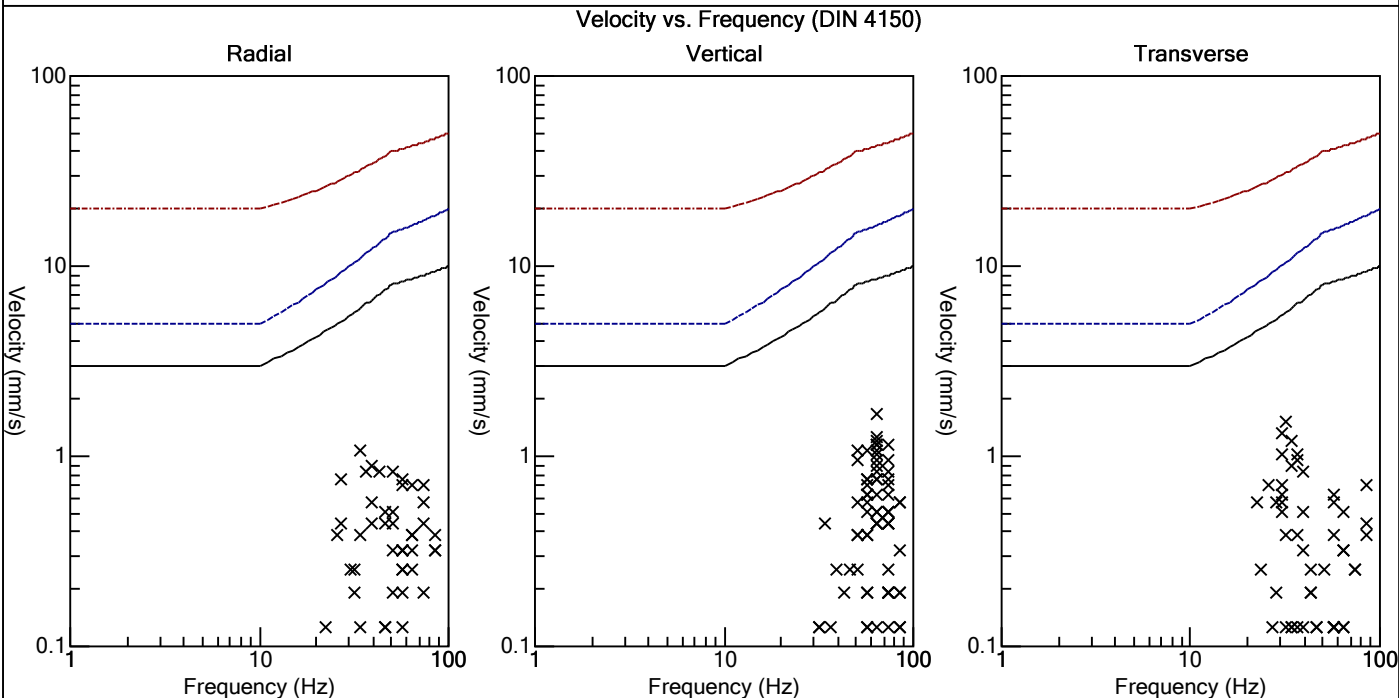
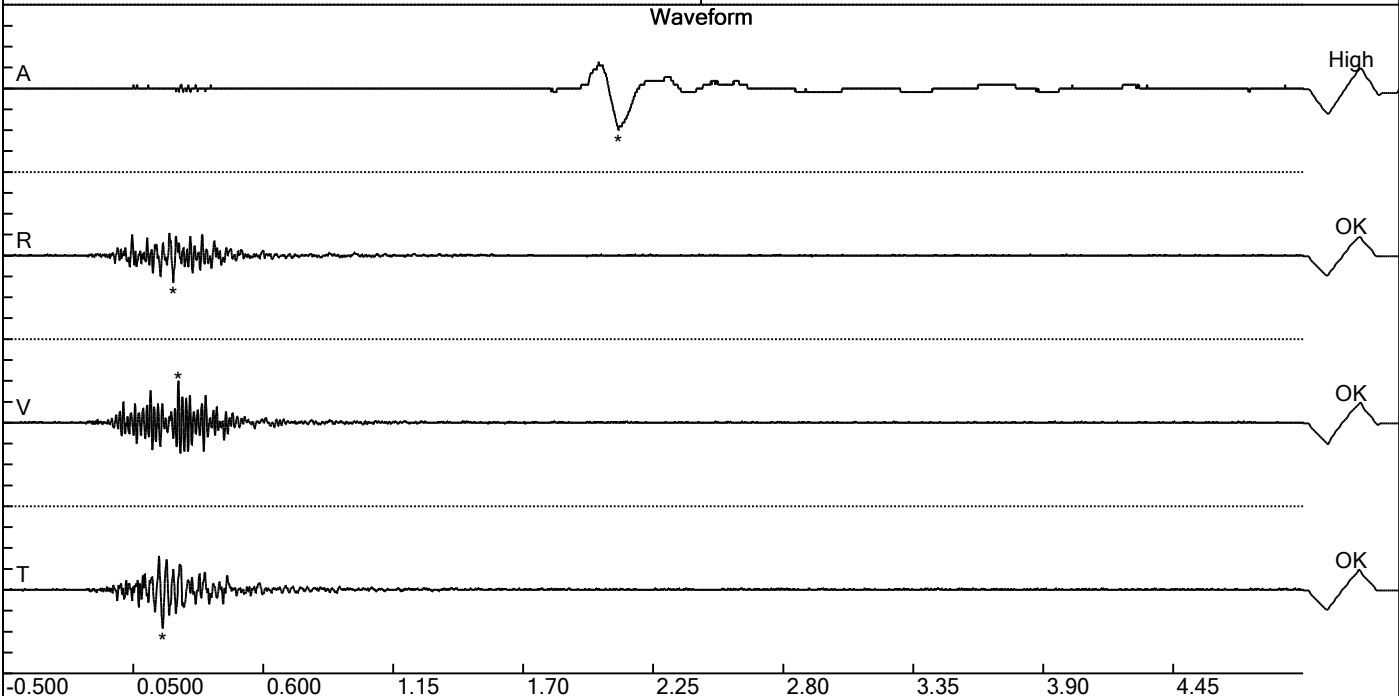


Carrière de BRS  
 Comblain -4  
 Tir du 09/11/2017  
 Sismographe placé au  
 261 Halleux  
 4710 Comblain-au-Pont

Record: 2164201711091455086.dtb  
 Number: 086  
 Seismograph: Mini-Seis  
 Type of Record: Waveform  
 Date: 9/11/2017 14:55:00  
 SN: 2164  
 Duration: 5.50 Seconds  
 Sample Rate: 1024  
 Pre-Trigger: 0.5 Seconds  
 Seismic Trigger: 0.508 mm/s  
 Acoustic Trigger: 142.1 dB  
 Voltage: 6.3

Peaks and Frequencies	Graph Information
PPV Maximum: 1.65 mm/s Acoustic: 120.8 dB @ 4.3 Hz (2.10 s) Radial: 1.08 mm/s @ 34.1 Hz (0.220 s) Vertical: 1.65 mm/s @ 64.0 Hz (0.241 s) Transverse: 1.52 mm/s @ 32.0 Hz (0.175 s) Last Calibration Date: 21/04/2015	Time Range: -0.500 s to 5.00 s Acoustic Scale: 0.110 Mb/div Seismic Scale: 0.825 mm/s/div Time Intervals: 0.550 Seconds



Carrière de BRS  
 Comblain -4  
 Tir du 09/11/2017  
 Sismographe placé au  
 261 Halleux  
 4710 Comblain-au-Pont

Record: 2164201711091455086.dtb  
 Number: 086  
 Seismograph: Mini-Seis  
 Type of Record: Waveform  
 Date: 9/11/2017 14:55:00  
 SN: 2164  
 Duration: 5.50 Seconds  
 Sample Rate: 1024  
 Pre-Trigger: 0.5 Seconds  
 Seismic Trigger: 0.508 mm/s  
 Acoustic Trigger: 142.1 dB  
 Voltage: 6.3

Peaks and Frequencies	Graph Information
PPV Maximum: 1.65 mm/s Acoustic: 120.8 dB @ 4.3 Hz (2.10 s) Radial: 1.08 mm/s @ 34.1 Hz (0.220 s) Vertical: 1.65 mm/s @ 64.0 Hz (0.241 s) Transverse: 1.52 mm/s @ 32.0 Hz (0.175 s) Last Calibration Date: 21/04/2015	Time Range: -0.500 s to 5.00 s Acoustic Scale: 0.110 Mb/div Seismic Scale: 0.825 mm/s/div Time Intervals: 0.550 Seconds

